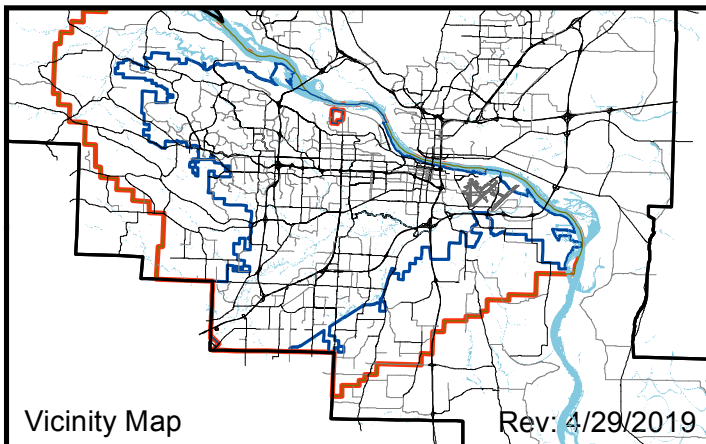


Land Use Plan Change

City of Little Rock Planning & Development



Case: **LU18-02-02**
 Location: **NW of W. Markham & Van Buren St.**

Ward: **3**
 PD: **4**
 CT: **15.01**
 TRS: **T1N R12W 6**

A north arrow is located to the right of the text, pointing upwards. Below it is a scale bar with markings at 0, 160, and 320 feet.